

DISCONNECT & TEST TERMINAL BLOCKS



CKT4U

DISCONNECT & TEST SCREW CLAMP

4mm²

Description	Part No.
Conductor cross section stranded, 0.2 - 4.0mm ²	CKT4U
Dimensions (L x W x H), 46.3 x 6 x 48.3mm	
Colour "grey", 800V/28A	
Connection: 1 IN / 1 OUT	

ACCESSORIES

Marking tag: K6 size	
Endplate:	EPCKT4U
End clamp:	CA702
Comb insulated shorting link:	CA714/**

** Specify 2, 3, 4 or 10 way at time of order.



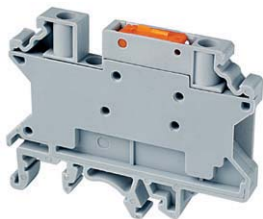
CKT4U/4

Description	Part No.
Conductor cross section stranded, 0.2 - 4.0mm ²	CKT4U/4
Dimensions (L x W x H), 65 x 6 x 54.3mm	
Colour "grey", 800V/17.5A	
Connection: 2 IN / 2 OUT	

ACCESSORIES

Marking tag: K6 size	
Endplate:	EPCKT4U/4
End clamp:	CA702
Comb insulated shorting link:	CA714/**

** Specify 2, 3, 4 or 10 way at time of order.



CKT4SP

Description	Part No.
Conductor cross section stranded, 0.2 - 4.0mm ²	CKT4SP
Dimensions (L x W x H), 58.5 x 6 x 46mm	
Colour "grey", 1000V/28A	
Connection: 1 IN / 1 OUT	

ACCESSORIES

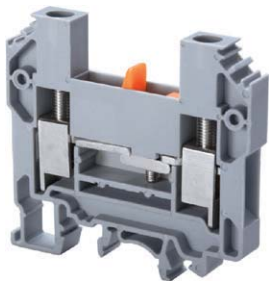
Marking tag: K6 size	
End clamp:	CA702
Non-insulated shorting link:	CA722/*
Insulated shorting link:	CA742/*
Comb insulated shorting link:	CA714/**

* Specify 2, 3, 4, 10 or 100 way at time of order.

** Specify 2, 3, 4 or 10 way at time of order.

 EPCKT4U EPCKT4U/4	 CA702	 CA722	 CA742/*	 CA714/*
---	--	--	--	--

DISCONNECT & TEST TERMINAL BLOCKS



CDTTU

DISCONNECT & TEST SCREW CLAMP

6mm²

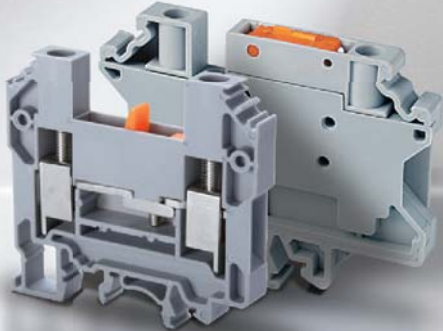
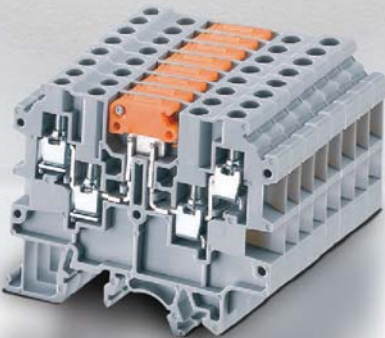
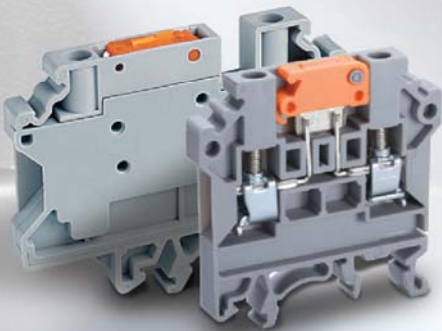
Description	Part No.
Conductor cross section stranded, 1.5 - 10mm ²	CDTTU
Dimensions (L x W x H), 63 x 8 x 58.7mm	
Colour "grey", 800V/57A	
Connection: 1 IN / 1 OUT	

ACCESSORIES

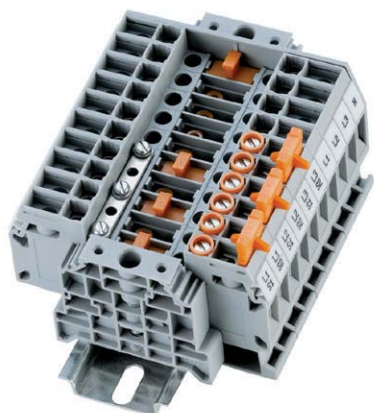
Marking tag: K8 size	
Endplate:	EPCDTTU
End clamp:	CA702
Comb insulated shorting link:	CA710/**

** Specify 2, 3, 4 or 10 way at time of order.

		
EPCDTTU	CA702	CA710/**



TEST TERMINAL BLOCKS



CDS6U-KIT3P

3 PHASE kWh METER TEST TERMINALS STANDARD 'GREY' COLOUR SCREW CLAMP

0.25mm² - 6mm²

Description	Part No.
Conductor cross section stranded. 0.2 - 6.0mm ²	CDS6U-KIT3P
Dimensions (L x W x H), 82 x 81.5 x 60mm	
Marking tag: K8 size	
3 CT Kit	

- Kit does not include end stops (CA202) or the mounting rail.

Description	Part No.
Conductor cross section stranded. 0.2 - 6.0mm ²	CDS6U-KIT3P-4CT
Dimensions (L x W x H), 82 x 100 x 60mm	
Marking tag: K8 size	
4 CT Kit	

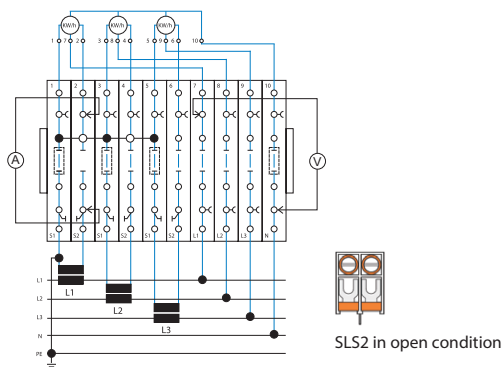
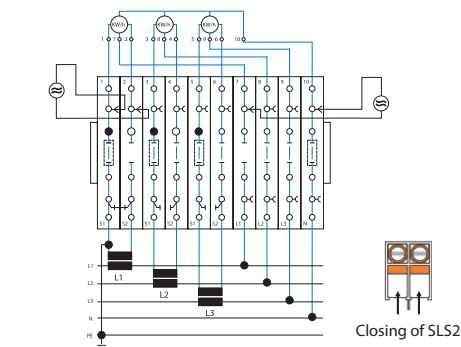
- Kit does not include end stops (CA202) or the mounting rail.

TEST TERMINAL INSTRUCTIONS

Meter test for L1 through external power supply

Sequence for test:

- 1 - Close short circuit slide of terminals 1 and 2.
- 2 - Open disconnect link of terminal 2 and 7.
- 3 - Connect external power supply to test socket of terminals 1, 2 and 7, 10.



Comparison measurement for L1

Sequence for test:

- 1 - Remove shorting link screw from terminal 2.
- 2 - Connect ammeter to test sockets of terminal 2.
- 3 - Open disconnect link of terminal 2.
- 4 - Connect voltmeter to test sockets of terminals 7 and 10.

Changing the meter for L1

Sequence for test:

- Close short circuit slide of terminals 1 and 2.
- Open disconnect link of terminal 2 and 7.
- Disconnect meter for L1 at terminals 1, 2, 7 and 10.

